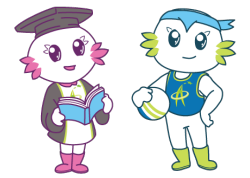




香港資優教育學苑

The Hong Kong Academy for Gifted Education

香港特別行政區政府教育局資助
Subvented by the Education Bureau, the Government of the HKSAR



[Learn about Gigi & Yoyo](#)

C3MUZ001C

[\(Token- required\)](#)

[**Gifted Programme**]

Music Course (Level III)

SING - CONNECT - TRANSFORM — Choral Summer Camp

Local University



Application Deadline

30 Jun 12:00 noon

Result Release

3 Jul 2026

Intended Learning Outcomes

Upon completion of the gifted programme, gifted students should be able to:

1. Analyse and perform choral repertoire from a diverse range of musical styles and historical periods with stylistic accuracy.
2. Demonstrate advanced proficiency in aural recognition and vocal execution and apply healthy vocal habits during the adolescent voice change period.
3. Collaborate effectively within both sectionals and full ensemble settings, performing complex choral pieces cohesively utilizing professional music facilities.
4. Cultivate emotional resilience, cultural empathy, and artistic ownership by reflecting on the historical and emotional contexts of choral works.

If student members withdraw from the programme after the Application Deadline, the token will be deducted.

◆ Gifted Programme Introduction

This 6-day, 5-night summer camp will be hosted at a local university. Tailored for dedicated young musicians, the camp offers a university residency experience where student members can learn from globally renowned artist-teachers who are widely recognised in both industry and academia.

Participants will develop their artistic potential within top-tier music facilities and perform alongside talented peers. This camp consists of specialised workshops focusing on aural training, vocal techniques, and navigating adolescent changing voices. To ensure personalised artistic growth, the programme features masterclasses and studio classes.

Furthermore, participants will engage in intensive sectionals and full ensemble rehearsals, utilising the university's cutting-edge spaces to achieve musical excellence. This camp also serves as a foundational milestone for future talent development.

Schedule

Session	Date	Time	Venue
1	14 Jul 2026 (Tue)	9:00 a.m. Check in	University Campus (including Student Hostel)
2	15 Jul 2026 (Wed)	Full Day Activity	
3	16 Jul 2026 (Thu)	Full Day Activity	
4	17 Jul 2026 (Fri)	Full Day Activity	
5	18 Jul 2026 (Sat)	Full Day Activity	
6	19 Jul 2026 (Sun)	9:00 p.m. Check out	

[Please click here for application](#)

◆ Suitable for

- S1 to S4 HKAGE student members in 2025/26 school year and **12 years old** or older on the first day of the camp (14 Jul 2026)
- Class size: 50

◆ Certificate

E-Certificate will be awarded to gifted students who have:

- attended all sessions; and
- completed all the assessments with satisfactory performance

◆ Medium of Instruction

English

◆ Screening Criteria

Please answer the screening question in the online application form.

*The screening question is designed to help the applicant understand the course level and the course content. The question must be answered by the student applicant and it can only be attempted once. The answer cannot be changed once the application is submitted. Selection is based on students' performance in answering the question.

◆ Remarks

- Course Fee and accommodation are free of charge**
- ****Students who are admitted must complete all the activities of the programme. Student who is absent without valid justification or withdraws during the programme period may be required to pay the relevant programme fee (HK\$ 6,900).**
- Student members' accommodation will be arranged by the university
- Student members are responsible for their own meals

◆ Enquiries



3940 0101



programme@hkage.org.hk