



香港資優教育學苑

The Hong Kong Academy for Gifted Education

香港特別行政區政府教育局資助
Subvented by the Education Bureau, the Government of the HKSAR

E1ENV020W

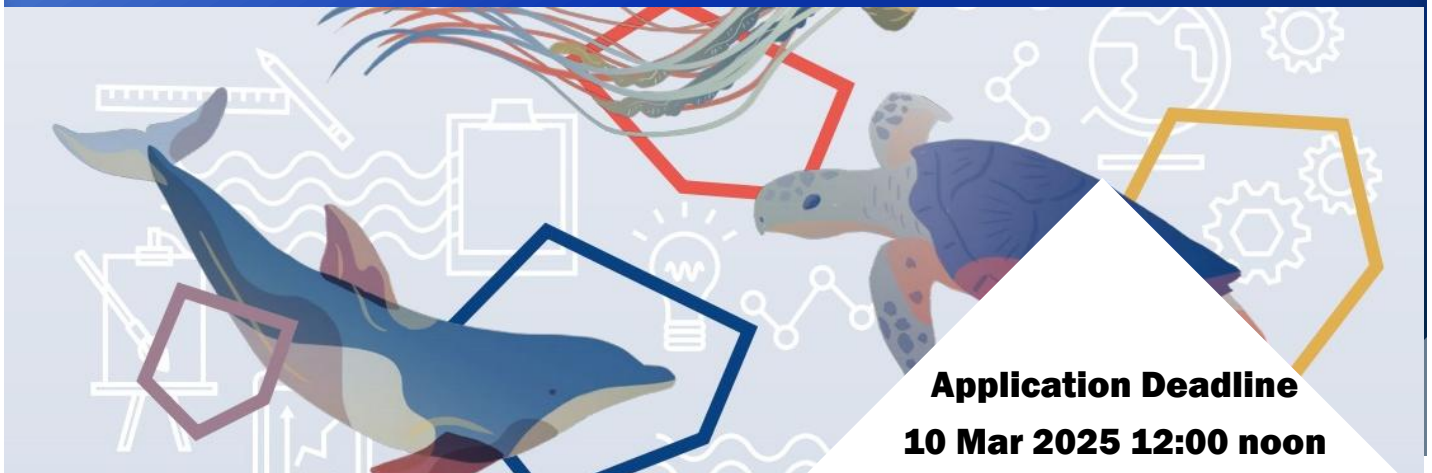
[\(Token- required\)](#)

[**Gifted Programme**]

Environmental Science Workshop (Level I)

Ocean and Land Discovery Special Edition

Instructors from Ocean Park Academy Hong Kong



Application Deadline
10 Mar 2025 12:00 noon

Result Release
14 Mar 2025

Intended Learning Outcomes

Upon completion of the gifted programme, gifted students should be able to:

1. distinguish the animals under different climates, including pole regions and rainforests;
2. explain the similarities and differences between humans and marine animals, including dolphins;
3. investigate other animals' special senses as well as their societal applications;
4. explore the impacts of climate change on various animals under different climate situations;
5. reflect on how to live sustainably in Hong Kong society.

◆ Gifted Programme Introduction

The programme aims to stimulate students' interest in exploring the environment, as well as discovering the interdependence of nature and humans. Collaborative learning is applied to encourage students to investigate the nature, serving as supplementary learning materials to facilitate students' understanding in the relationship between the environment and organisms.

◆ Schedule

Session	Date	Time	Venue
1	23 April 2025 (Wed)	10:00 a.m. – 1:00 p.m. (Gathering Time: 9:40 a.m.) * Late comers will not be entertained	Ocean Park Hong Kong (Direction)

◆ Suitable for

- P4 – P6 HKAGE student members in 2024/25 school year only.
- Class size: 30
- This programme is similar to Environmental Science Workshop (Level I): Ocean and Land Discovery Special Edition (E1ENV010W) in 23/24 school year.
- Student members would be selected randomly by the computer system. The decision of HKAGE on the result of the selection should be final.

◆ Pre-requisite

No special prerequisites are needed. Sections of the outdoor visits certain efforts will be required. Participants should assess and consider their own health conditions before making application for this programme.

◆ Medium of Instruction

English with English handouts

◆ Certificate

E-Certificate will be awarded to gifted students who have:

- attended ALL sessions; AND
- completed all the assignments with satisfactory performance