



S3IM0007C

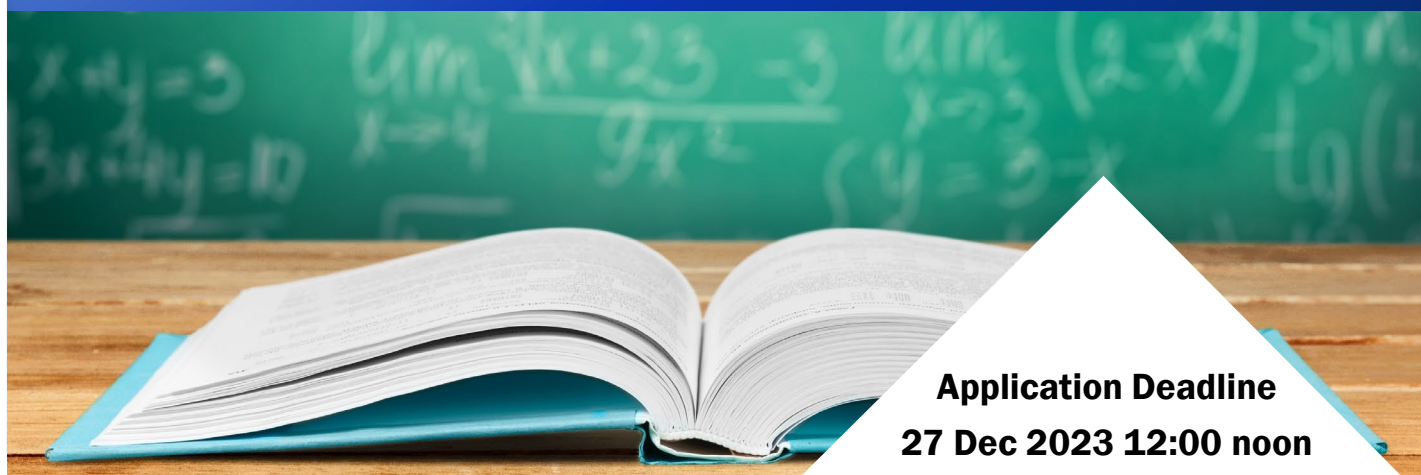
(Token- required)

Advanced Course in
Mathematical Olympiad

International Mathematical Olympiad Training 2023-24 (Phase III) Level 2

Dr Ching Tak Wing and other trainers

English version only 只供英文版



Application Deadline
27 Dec 2023 12:00 noon

Result Release
2 Jan 2024

Intended Learning Outcomes

Upon completion of the programme, participants should be able to:

1. broaden their mathematical knowledge in a variety of areas on the basis of senior secondary mathematics curriculum;
2. learn more about the scope of International Mathematical Olympiad Training;
3. strengthen their problem solving and higher-order thinking skills.

◆ Introduction

- A comprehensive mathematics programme which covers such as Algebra, Number Theory, Geometry and Combinatorics
- Introduce the basic curriculum of the International Mathematical Olympiad competition
- Broaden student's mathematical knowledge, strengthen their problem solving, higher order and logical thinking skills
- Training consists of four phases: Phase I (Jul – Aug), Phase II (Sep – Dec), Phase III (Jan – Mar 2024) and Pre-IMO Intensive training.
- Students with outstanding performance in the programme would be selected to represent Hong Kong in the 65th IMO 2024

The International Mathematical Olympiad Training programmes are co-organized with International Mathematical Olympiad Hong Kong Committee (IMOHKC)

◆ Target Participants

Non-HKAGE student members who

- were awarded **Honourable Mention or above in IMO Preliminary Selection Contest – Hong Kong**

HKAGE student members who

- were awarded **Honourable Mention or above in IMO Preliminary Selection Contest – Hong Kong** **or**
- have participated in **any phase of International Mathematical Olympiad (IMO) training** **or**
- have completed **any Phase of China Girls Mathematics Olympiad (CGMO) training** **or**
- have completed **any Phase of Introduction to Olympiad Mathematics (ITOM) training** with Distinction or **both phases of ITOM** with Merit.

Class size: 30

This programme is the same as E3IM0007C in the school year 2021/22

◆ Certificate

E-certificate will be awarded to participants who have:

- attended **at least 8 sessions**; and
- completed all the assignments with satisfactory performance

◆ Medium of Instruction

Cantonese with English Handouts

◆ Schedule

Session	Date	Time	Venue
1	Sat, 6 Jan 2024		
2	Sat, 13 Jan 2024		
3	Sat, 27 Jan 2024		
4	Sat, 3 Feb 2024		
5	Wed, 14 Feb 2024	14:00 – 17:00	Room 204, HKAGE
6	Sat, 17 Feb 2024		
7	Sat, 24 Feb 2024		
8	Sat, 2 Mar 2024		
9	Sat, 9 Mar 2024		
10	Tue, 12 Mar 2024	9:00 – 13:00	Room 105, HKAGE

Remarks:

Students **MUST ATTEND** the test held on **12 March 2024 (Tuesday)**. No make-up test will be arranged.

◆ Appendix - IMO-related Programmes

- IMO-related programmes is a series of programmes that provide International Mathematical Olympiad (IMO) related training. It aims to equip students with the mathematics knowledge and curriculum of IMO, problem solving skills, and high-order thinking skills progressively.
- The programmes are divided into three levels: Introductory, Intermediate, and Advanced level.
- There are different enrollment methods, e.g. aptitude test. For details, please refer to each programme's poster

Introductory Level

Maths Ignition (MI) Programmes

- For S1-S3 HKAGE student members
- Introductory training in Mathematical Olympiad by topics
- Application for five MI programmes will be open in Apr, Jul & Oct each year
- Enroll through aptitude test

Introductory to Intermediate Level

Introduction to Olympiad Mathematics (ITOM)

- For S1-S6 HKAGE student members
- Two phases of training
- Application will be open in Jan each year
- Enroll through aptitude test; OR
- Students who attained (a) distinction in 2 MI courses; OR (b) merit or above in 3 MI courses; OR (c) completion or above in 4 MI courses could enroll directly

Introductory to Advanced Level

China Girls Mathematics Olympiad (CGMO) Trainings

- For S1-S6 HKAGE female HKAGE student members
- Three phases of training
- Application will be open in Jan each year
- Enroll through aptitude test; OR
- Students who have completed any phase of IMO/CGMO/ITOM Training could enroll directly
- CGMO HK Team members will be selected based on their performance in the trainings

Advanced Level

International Mathematical Olympiad (IMO) Trainings

- For all awardees of IMO Preliminary Selection Contest - Hong Kong; OR students who got the certificate of distinction in any phase of ITOM training; OR students who got the certificate of merit in both phases of ITOM training; OR students who have participated in any phase of IMO/CGMO training
- Four phases of training
- IMO HK Team members will be selected based on their performance in the tests and trainings

*For detailed flowchart and timeline, please refer to the next page.

◆ Enquiries



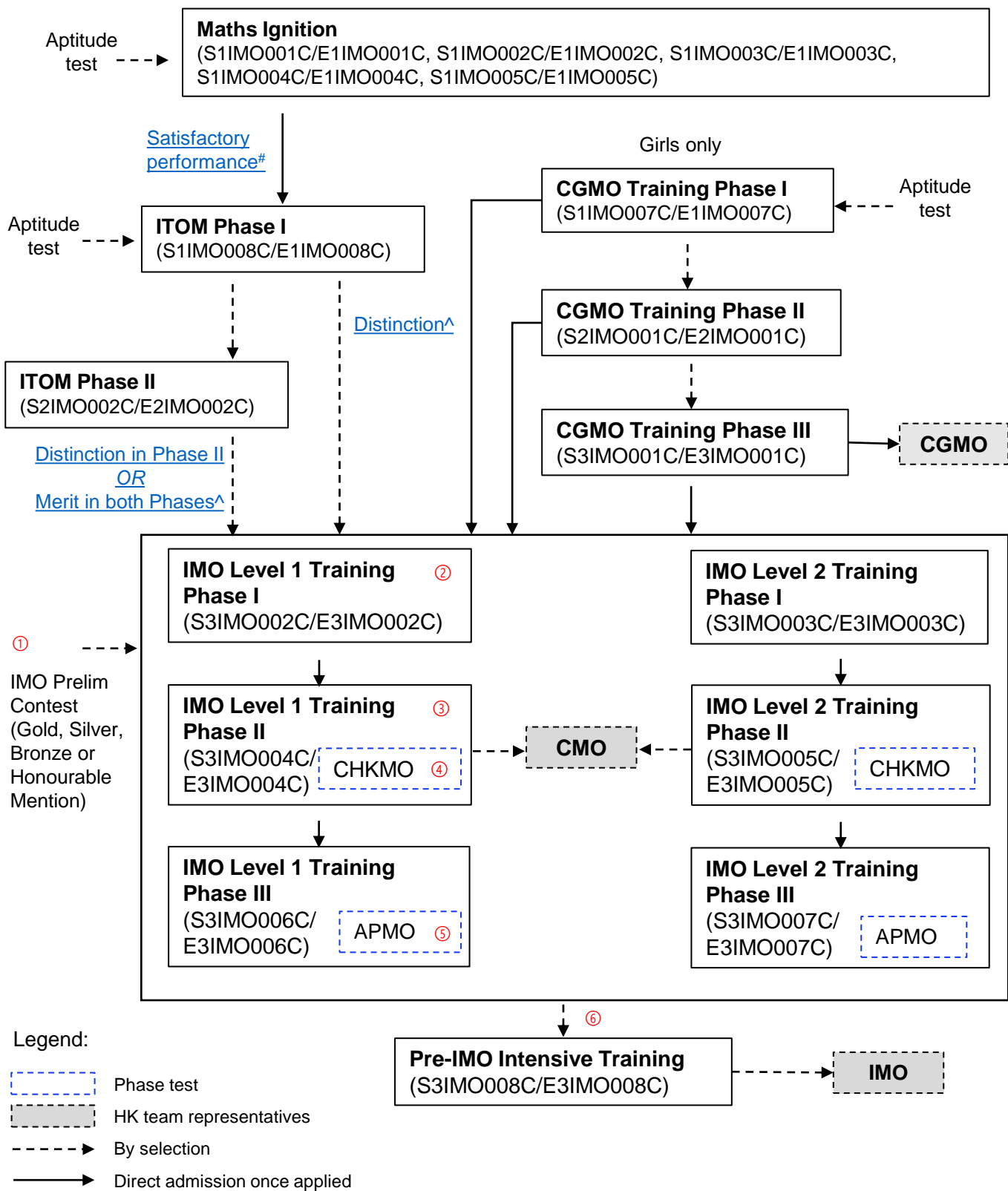
3940 0101



programme@hkage.org.hk

International Mathematical Olympiad Related Programmes

(English version only 只提供英文版)



IMO2024 HK Team representatives are selected based on their performance in the assessments from ① through ⑥
 IMO2025 HK Team representatives are selected based on their performance in the assessments from ② through ⑥

IMPORTANT information for International Mathematical Olympiad (IMO) Training

IMO Training

Eligibility

- IMO Preliminary Selection Contest awardees ① or
- Student members who have completed any phase of the IMO Training or
- Student members who have completed any phase of CGMO Training or
- Student members who have completed any phase of ITOM Training with Distinction
- Student members who have completed both phases of ITOM Training with Merit

Training /Competition	Content	Tentative schedule	Remark
Phase I Training	13 x 3-hr lessons	Jul - Aug	
	Test 1 ② 3 hr, 6 proof problems	Aug	<ul style="list-style-type: none"> ▪ Phase test ▪ No make-up test
Phase II Training	17 x 3-hr lessons	Sep - Dec	
	Test 2 ③ 3 hr, 4 proof problems	Oct	<ul style="list-style-type: none"> ▪ Phase test ▪ No make-up test
	CHKMO ④ 3 hr, 4 proof problems	Dec	<ul style="list-style-type: none"> ▪ Phase test ▪ No make-up test
Phase III Training	8 x 3-hr lessons	Jan - Mar	
	APMO ⑤ 4 hr, 5 proof problems	Mar	<ul style="list-style-type: none"> ▪ End-of-phase test ▪ No make-up test
Selection Tests for Pre-IMO Intensive Training	Test 3 ⑥ 2 days x 4.5 hr, 3 proof problems	Apr or May	<ul style="list-style-type: none"> ▪ About 20 students to be selected based on previous tests ▪ No make-up tests
Pre-IMO Intensive Training	IMO HK Team (6 students) & Alternate Team (6 students)		<ul style="list-style-type: none"> ▪ 12 students to be selected based on previous tests
IMO	2 days x 4.5 hr, 3 proof problems		<ul style="list-style-type: none"> ▪ IMO HK Team
CMO	2 days x 4.5 hr, 3 proof problems		<ul style="list-style-type: none"> ▪ About 6 students to be selected based on previous tests
CGMO	2 days x 4 hr, 4 proof problems		<ul style="list-style-type: none"> ▪ About 8 female students selected via CGMO training

IMO2024 HK Team representatives are selected based on their performance in the assessments from ① through ⑥
 IMO2025 HK Team representatives are selected based on their performance in the assessments from ② through ⑥

Useful websites

IMO official website:	http://www.imo-official.org/
IMO website:	http://imo2023.jp/
Art of Problem Solving:	http://www.artofproblemsolving.com/
Mathematical Excalibur:	http://www.math.ust.hk/excalibur/

#Entering ITOM with Satisfactory Performance in Maths Ignition (MI) Programmes

Starting from 1 September 2023 onwards, students who fulfilled one of the criteria below are eligible to enter ITOM - "Introduction to Olympiad Mathematics (Phase I)" (S1IMO008C):

- good results in aptitude test; **OR**
- distinction in at least 2 different MI courses; **OR**
- merit/distinction in at least 3 different MI courses; **OR**
- pass/merit/distinction in at least 4 different MI courses

[\[back to frontpage\]](#)

^Entering IMO Training with Satisfactory Performance in ITOM or CGMO

Starting from 1 September 2023 onwards, students who fulfilled one of the criteria below are eligible to enter IMO training Phase I Level I (S3IMO002C):

- Non-HKAGE student members / HKAGE student members who were awarded Honourable Mention or above in IMO Preliminary Selection Contest – Hong Kong; **OR**
- HKAGE student members who have completed any phase International Mathematical Olympiad (IMO) Training; **OR**
- HKAGE student members who have completed any phase of CGMO; **OR**
- HKAGE student members who have attained distinction in any phase of ITOM; **OR**
- HKAGE student members who have attained merit in both phases of ITOM

[\[back to frontpage\]](#)